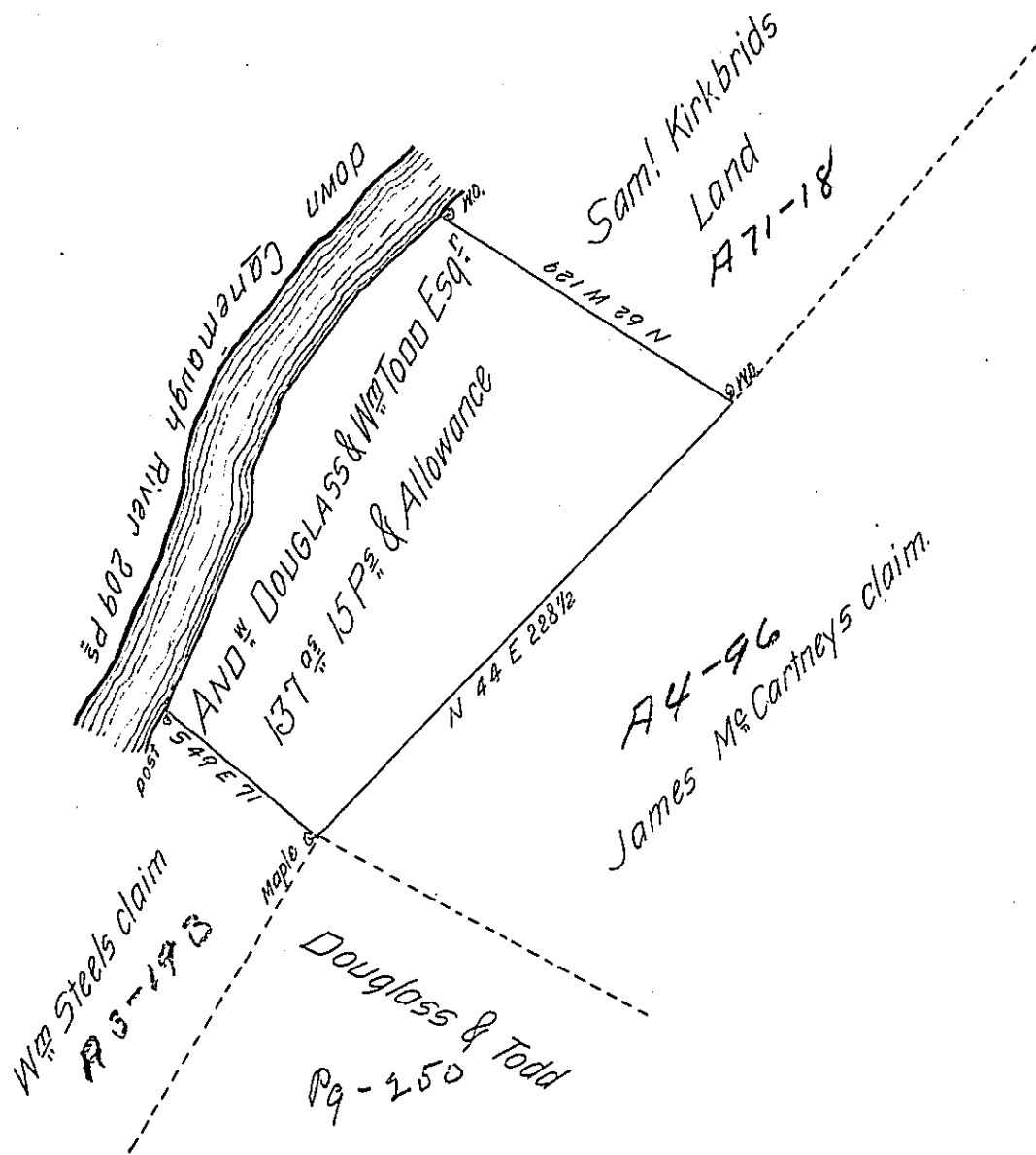


N <sup>o</sup> of Courses	Courses down	Cannemaugh River	distances down Cannemaugh
1	S 48 W	41	
2	S 36 W	51	
3	S 20 W	26 1/2	
4	South	16 1/2	
5	S 23 W	74	
Total dist.		209	



In pursuance of a Warrant dated Aug<sup>r</sup> 20<sup>th</sup> 1789 was Survey'd for Andrew Douglass & William Todd Esquire the above described Tract of Land Containing One Hundred & Thirty seven acres & 15 perches with an Allowance proportioned to Six P Cent Situate on the South Side of Cannemaugh River in Fairfield Township Westmoreland County Survey'd April 15<sup>th</sup> 1790.

P. John Moore D.S.

To Daniel Brodhead Esq<sup>r</sup> }  
 Surveyor General }

IN TESTIMONY that the above is a copy of the original remaining on file in the Department of Internal Affairs of Pennsylvania, made conformably to an Act of Assembly approved the 16th day of February, 1833, I have hereunto set my Hand and caused the Seal of said Department to be affixed at Harrisburg, this twelfth day of AUGUST 1904

*Joseph P. Brown*  
 Secretary of Internal Affairs.